

Question: 1

A storage administrator has requested a recommendation on upgrading their VNX5600 to a comparable Unity storage array. The solution requires a maximum capacity of 3.5 PB. To meet the administrator's requirement without over provisioning the capacity, which Unity Hybrid storage array is recommended?

- A. Unity 300
- B. Unity 400
- C. Unity 500
- D. Unity 600

Answer: D

Explanation:
Unity 600 delivers 1.2 TB to 3.0 PB max raw capacity.

Question: 2

What is the minimum VMware Hypervisor version a server must be running in order to support the deployment of a UnityVSA system?

- A. 4.0
- B. 5.0
- C. 5.5
- D. 6.0

Answer: C

Explanation:
UnityVSA requirements include: VMWare ESXi 5.x, 6.x
References:
<https://sweden.emc.com/products-solutions/trial-software-download/unity-vsa.htm>

Question: 3

Which feature is supported on a UnityVSA operating environment?

- A. Asynchronous Replication
- B. MCC Write Caching
- C. Quick Start Pool Provisioning
- D. Data at Rest Encryption

Answer: A

Explanation:

Asynchronous Unified Replication is available natively on UnityVSA. This allows file and block resources to be replicated between UnityVSA systems, between UnityVSA and physical Unity systems, and also locally back to the same UnityVSA system

Question: 4

A storage administrator is creating a host profile in Unisphere to provide host access to block storage resources using the iSCSI protocol. The host initiators were not automatically discovered and must be manually added.

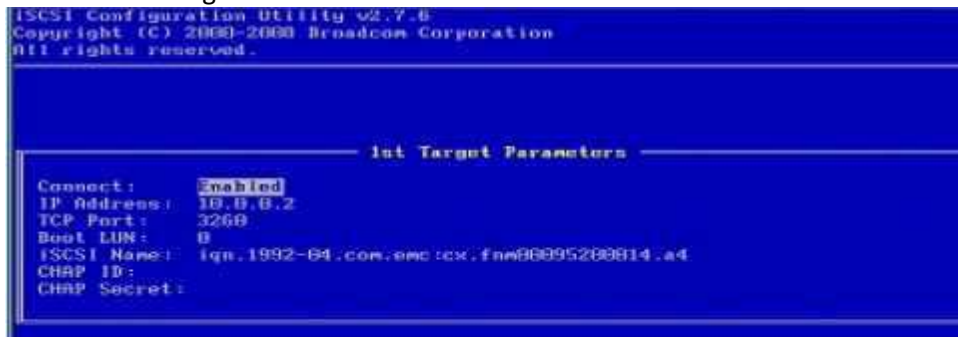
In addition to the SAN host IQN, what other configuration can be performed through the "Create iSCSI Initiator Wizard" window?

- A. Enable and disable CHAP settings
- B. Create Mutual CHAP secret
- C. Create Global CHAP secret
- D. Enter CHAP username and secret

Answer: D

Explanation:

A sample from a Broadcomm BIOS is provided in the figure below, illustrating the IQN assignment for the VNX iSCSI target.



References:

<https://www.emc.com/collateral/hardware/technical-documentation/h8229-vnx-vmware-tb.pdf> (page 34)

Question: 5

A storage administrator is configuring a storage pool on a Unity system containing Flash disks and SAS disks. What tier will the system assign to each of the disk types?

- A. Flash: Extreme Performance SAS: Performance
- B. Flash: Performance SAS: Capacity

- C. Flash: Extreme Performance SAS: Capacity
- D. Flash: Capacity SAS: Performance

Answer: A

Explanation:

Hybrid pools can have up to 3 tiers (Extreme Performance, Performance, and Capacity).

For the Extreme Performance tier, use only SAS Flashdrives.

For the Capacity tier, use only SAS drives.

Question: 6

DRAG DROP

Match each integrated ESRS characteristic with its attribute.

Characteristic:

Attribute:

- Use of external VM is required
- Port(s) used for inbound traffic
- Port(s) used for outbound traffic
- Internet connectivity is required

- Yes
- 80
- 443 and 8443
- No

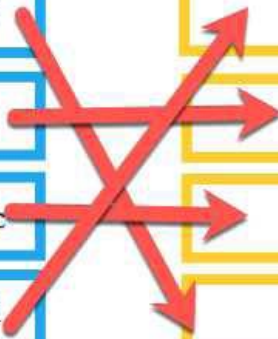
Answer:

Characteristic:

Attribute:

- Use of external VM is required
- Port(s) used for inbound traffic
- Port(s) used for outbound traffic
- Internet connectivity is required

- Yes
- 80
- 443 and 8443
- No



Question: 7

Which technology is used by Unity Snapshots?

- A. Copy on First Write
- B. Inline Deduplication
- C. Redirect on Write
- D. Block Compression

Answer: C

Explanation:

The technology used for snapshots of both block and file resources in Unity is called redirect on write.

Question: 8

DRAG DROP

What is the correct sequence of steps taken by the storage array when an AC power failure is detected?

Array is powered down	STEP 1
BIOS loads the PMP firmware	STEP 2
Storage Processors reset and goes into Low Power mode	STEP 3
Power is switched to the BBU and SPs are reset	STEP 4
SP Cache dirty pages are written to flash	STEP 5

Answer:

Storage processors

Power

BIOS

SP Cache

Array

Explanation:

The Battery Backup Unit (BBU) provides power to the Storage Processor in the event that cabinet power is lost. The BBU is designed to power the SP long enough for the system to store SP cache content to the M.2 SSD device before powering down. The BBU includes sensors which communicate its charge and health status to the SP. In the event the BBU is discharged the SP will disable cache until the BBU has recharged. In the event the BBU has faulted or cannot sustain enough charge, an alert will be generated.

References:

<https://www.emc.com/collateral/white-papers/h15084-dell-emc-unity-introduction-to-theplatform.pdf>

Question: 9

A system administrator is configuring asynchronous remote replication for an existing NAS server and its file systems on a Unity system. What should the administrator create to ensure all data is replicated for the NAS server and the file system?

- A. Replication sessions on each file system only
- B. Replication sessions for each file system first and then the NAS server
- C. A replication session on the NAS server and then manually create replication sessions on each file system
- D. A replication session for only the NAS server

Answer: D

Explanation:

Before File Systems or VMware NFS Datastores can be replicated, the NAS Server must be replicated.

Question: 10

Which Unity feature provides a high bandwidth connection for large file transfers, enables proactive Service Request generation and usage license reporting, and operates on a 24x7 basis?

- A. EMC Service Center
- B. Software Licensing Central
- C. Unisphere Central
- D. EMC Secure Remote Services

Answer: D

Explanation:

Benefit from secure, high-speed, 24x7 predictive monitoring and remote repair for your EMC information infrastructure. EMC Secure Remote Services (ESRS) enables EMC Customer Service to identify and proactively resolve potential issues before they can impact your business.