

CompTIA CNX-001

CompTIA CloudNetX Exam

For More Information – Visit link below:

<https://www.examsempire.com/>

Product Version

1. Up to Date products, reliable and verified.
2. Questions and Answers in PDF Format.



<https://examsempire.com/>

Visit us at: <https://www.examsempire.com/cnx-001>

Latest Version: 6.0

Question: 1

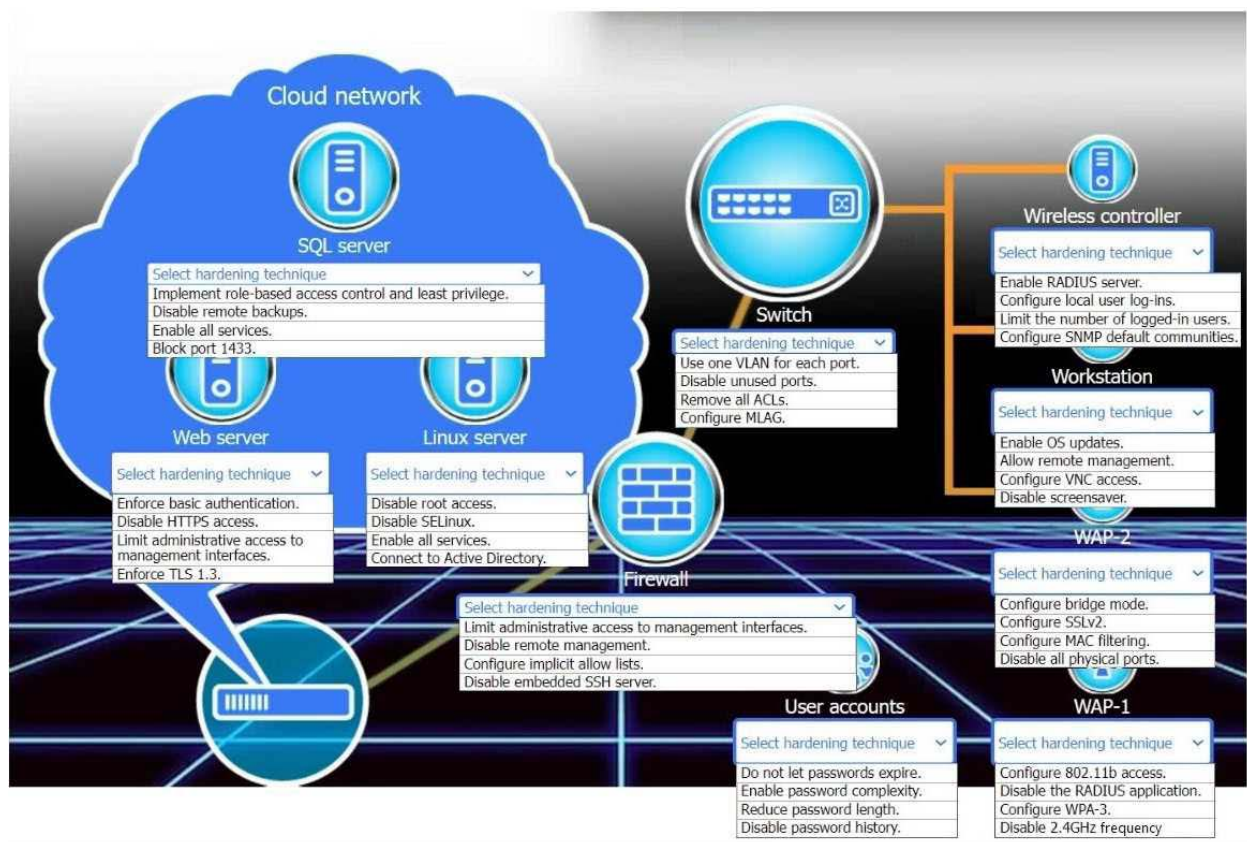
HOTSPOT

New devices were deployed on a network and need to be hardened.

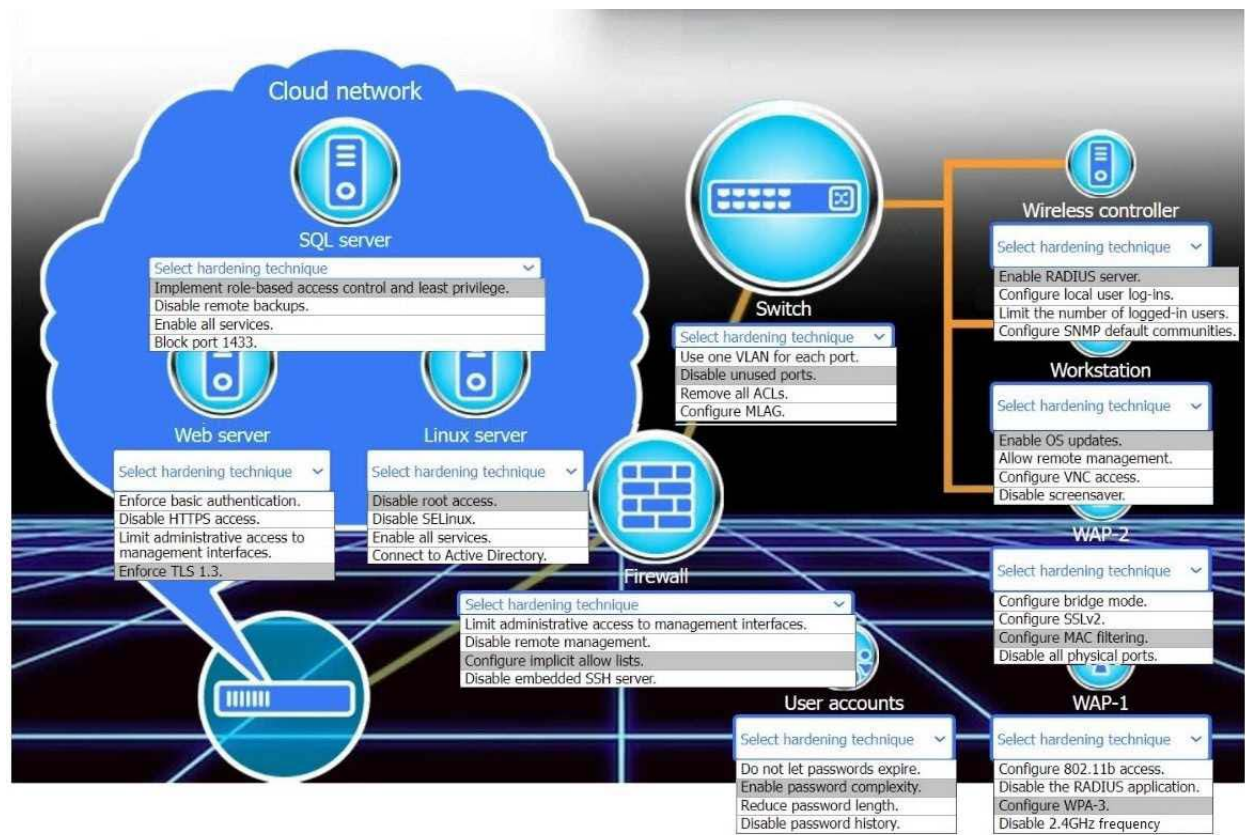
INSTRUCTIONS

Use the drop-down menus to define the appliance-hardening techniques that provide the most secure solution.

If at any time you would like to bring back the initial state of the simulation, please click the Reset All button.



Answer:



Question: 2

SIMULATION

A network administrator needs to resolve connectivity issues in a hybrid cloud setup. Workstations and VMs are not able to access Application

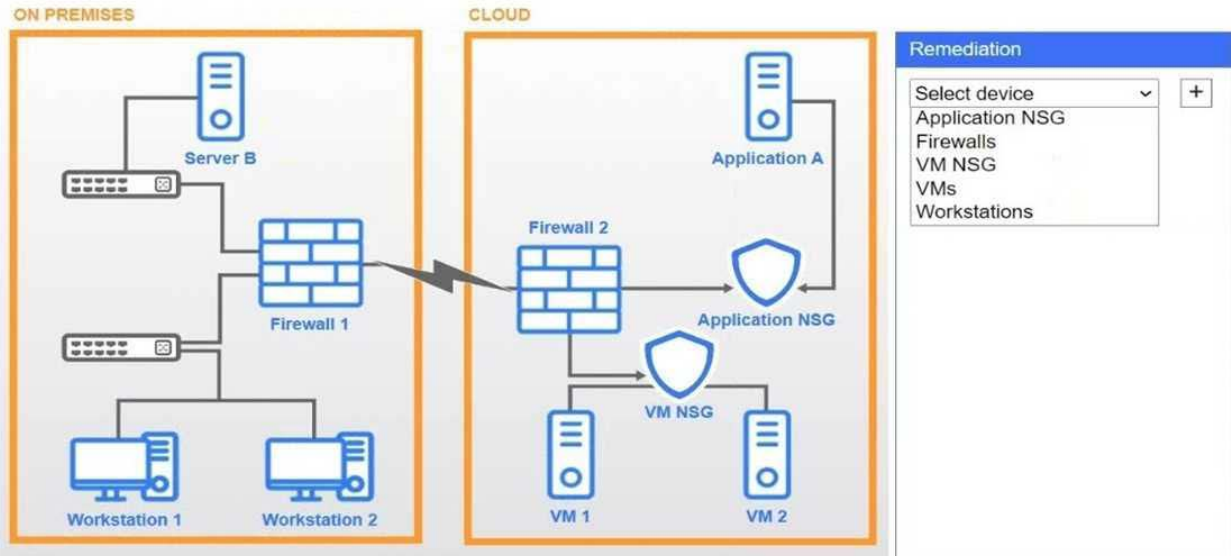
A. Workstations are able to access Server B.

INSTRUCTIONS

Click on workstations, VMs, firewalls, and NSGs to troubleshoot and gather information. Type help in the terminal to view a list of available commands.

Select the appropriate device(s) requiring remediation and identify the associated issue(s).

If at any time you would like to bring back the initial state of the simulation, please click the Reset All button.



Remediation

Select device

Application NSG
Firewalls
VM NSG
VMs
Workstations

+

Application NSG

Issue:

Incorrect routing table
Misconfigured rule
Packet loss
Blocked outbound traffic
VPN tunnel down
Duplicated IP addresses
Misconfigured subnet mask
Overly permissive configuration

Firewalls

Issue:

Incorrect routing table
Misconfigured rule
Packet loss
Blocked outbound traffic
VPN tunnel down
Duplicated IP addresses
Misconfigured subnet mask
Overly permissive configuration

VM NSG

Issue:

Incorrect routing table
Misconfigured rule
Packet loss
Blocked outbound traffic
VPN tunnel down
Duplicated IP addresses
Misconfigured subnet mask
Overly permissive configuration

VMs

Issue:

Incorrect routing table
Misconfigured rule
Packet loss
Blocked outbound traffic
VPN tunnel down
Duplicated IP addresses
Misconfigured subnet mask
Overly permissive configuration

Workstations

Issue:

Incorrect routing table
Misconfigured rule
Packet loss
Blocked outbound traffic
VPN tunnel down
Duplicated IP addresses
Misconfigured subnet mask
Overly permissive configuration

Server B

```
C:\>ipconfig
```

Windows IP Configuration

Ethernet adapter Local Area Connection:

Connection-specific DNS Suffix.:local.net

IPv4 Address. :10.9.8.14

Subnet Mask :255.255.255.0

Default Gateway. :10.10.10.1

```
C:\>
```

Firewall 1

Public IP: 86.210.16.10 Internal IP: 10.2.2.1

Source	Destination	Port	Action
10.3.9.0/24	any	any	allow
10.2.2.0/24	10.3.9.0/24	any	block
10.9.8.14	10.3.9.0/24	any	allow
10.9.8.14	10.2.2.0/24	any	allow
192.2.1.0/24	10.3.9.0/24	any	allow
10.3.9.0/24	192.2.1.0/24	any	allow
10.3.9.0/24	10.9.8.14	any	allow
10.2.2.0/24	10.9.8.14	any	allow
10.3.9.0/24	10.2.2.0/24	any	block
10.3.9.0/24	10.9.8.0/24	any	block
any	any	any	block

```
fw1# show ipsec tunnels ike
```

```
IPsec Tunnel: 0
```

```
IKE SA: ipip0 ID: 17 Version: IKEv2
```

```
Local: 86.210.16.10[500] Remote: 89.215.198.10[500]
```

```
Status: DOWN
```

```
IPsec Tunnel: 1
```

```
IKE SA: ipip1 ID: 21 Version: IKEv2
```

```
Local: 86.210.16.10[500] Remote: 51.187.39.9[500]
```

```
Status: ESTABLISHED Up: 762s Reauth: 25278s
```

Workstation 1



C:\>

Workstation 2



C:\>

Firewall 2

Public IP: 89.215.198.10 Internal IP: 10.3.9.1

Source	Destination	Port	Action
10.3.9.0/24	any	any	allow
192.2.1.0	any	any	allow
10.2.2.0/24	10.9.8.14	any	allow
10.2.2.0/24	10.3.9.0/24	any	block
10.2.2.0/24	192.2.1.11	any	allow
10.2.2.0/24	10.9.8.0/24	any	block
10.2.2.0/24	192.2.1.0/24	any	block
10.9.8.14	10.3.9.0/24	any	allow
10.9.8.14	10.2.2.0/24	any	allow
10.9.8.14	192.2.1.11	any	allow
10.3.9.0/24	192.2.1.11	any	allow
10.3.9.0/24	10.9.8.14	any	allow
10.3.9.0/24	10.2.2.0/24	any	block
10.3.9.0/24	10.9.8.0/24	any	block
10.3.9.0/24	192.2.1.0/24	any	block
any	any	any	block

```

fw2# show ipsec tunnels ike
IPsec Tunnel: 1
IKE SA: ipip1 ID: 53 Version: IKEv2
Local: 89.215.198.10[500] Remote: 43.250.192.5[500]
Status: ESTABLISHED Up: 2152s Reauth: 22763s

IPsec Tunnel: 2
IKE SA: ipip2 ID: 58 Version: IKEv1
Local: 89.215.198.10[500] Remote: 86.210.16.10[500]
Status: DOWN

IPsec Tunnel: 3
IKE SA: ipip3 ID: 60 Version: IKEv2
Local: 89.215.198.10[500] Remote: 52.47.73.70[500]
Status: ESTABLISHED Up: 11748s Reauth: 13262s

```


Application NSG

Source	Destination	Port	Action
192.2.1.0/24	any	any	allow
10.2.2.0/24	192.2.1.0/24	any	allow
10.3.9.0/24	192.2.1.0/24	any	block
10.9.8.14	192.2.1.0/24	any	allow
192.2.1.0/24	10.9.8.14	any	allow
192.2.1.0/24	10.2.2.0/24	any	block
192.2.1.0/24	10.3.9.0/24	any	allow
192.2.1.0/24	10.9.8.0/24	any	block
any	192.2.1.0/24	any	block

Application A



```
C:\>ipconfig
```

```
Windows IP Configuration
```

```
Ethernet adapter Local Area Connection:
```

```
    Connection-specific DNS Suffix.:local.net
```

```
    IPv4 Address. . . . .:192.2.1.11
```

```
    Subnet Mask . . . . .:255.255.255.0
```

```
    Default Gateway. . . . .:192.2.1.1
```

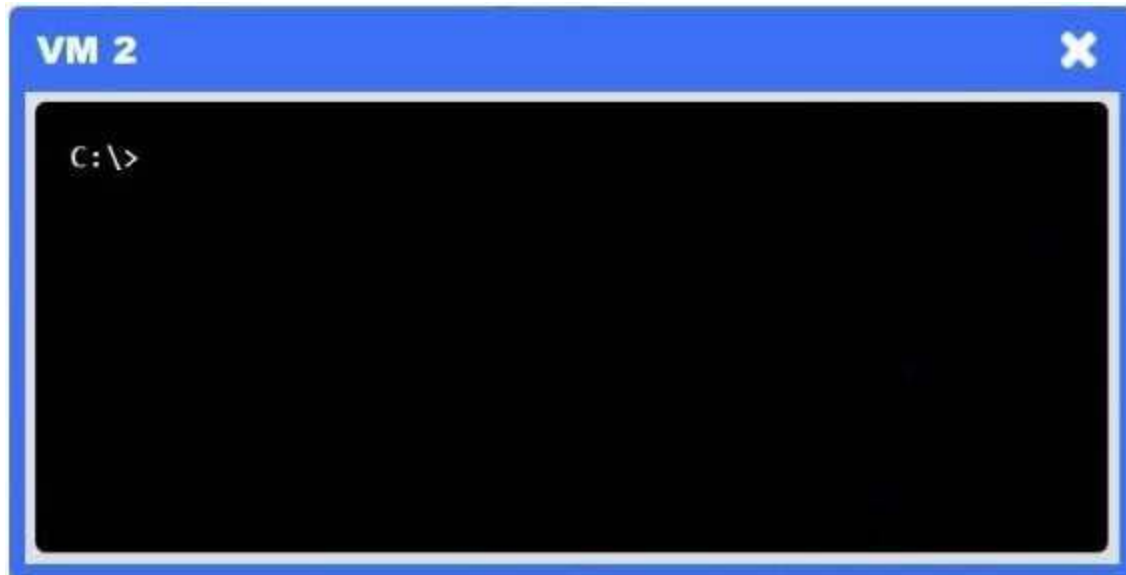
```
C:\>
```

VM NSG

Source	Destination	Port	Action
10.3.9.0/24	any	any	allow
10.2.2.0/24	10.3.9.0/24	any	block
10.9.8.14	10.3.9.0/24	any	allow
192.2.1.0/24	10.3.9.0/24	any	allow
10.3.9.0/24	192.2.1.0/24	any	allow
10.3.9.0/24	10.9.8.14	any	allow
10.3.9.0/24	10.2.2.0/24	any	block
10.3.9.0/24	10.9.8.0/24	any	block
any	10.3.9.0/24	any	block

VM 1

C:\>



**Answer: See
explanation below.**

Remediation

Select device

Application NSG

Firewalls

VM NSG

VMs

Workstations

+

Application NSG

Issue:

Incorrect routing table

Misconfigured rule

Packet loss

Blocked outbound traffic

VPN tunnel down

Duplicated IP addresses

Misconfigured subnet mask

Overly permissive configuration

Firewalls

Issue:

Incorrect routing table

Misconfigured rule

Packet loss

Blocked outbound traffic

VPN tunnel down

Duplicated IP addresses

Misconfigured subnet mask

Overly permissive configuration

Explanation:

Firewalls → VPN tunnel down

The IPsec tunnel between on-prem Firewall 1 and cloud Firewall 2 (ipip0/ipip2) is down, so no traffic can traverse to the cloud.

Application NSG → Misconfigured rule

There's a "block" rule for 10.3.9.0/24 → 192.2.1.0/24, preventing legitimate on-prem clients from reaching Application A.

Question: 3

HOTSPOT

You are designing a campus network with a three-tier hierarchy and need to ensure secure

connectivity between locations and traveling employees.

INSTRUCTIONS

Review the command output by clicking on the server, laptops, and workstations on the network.

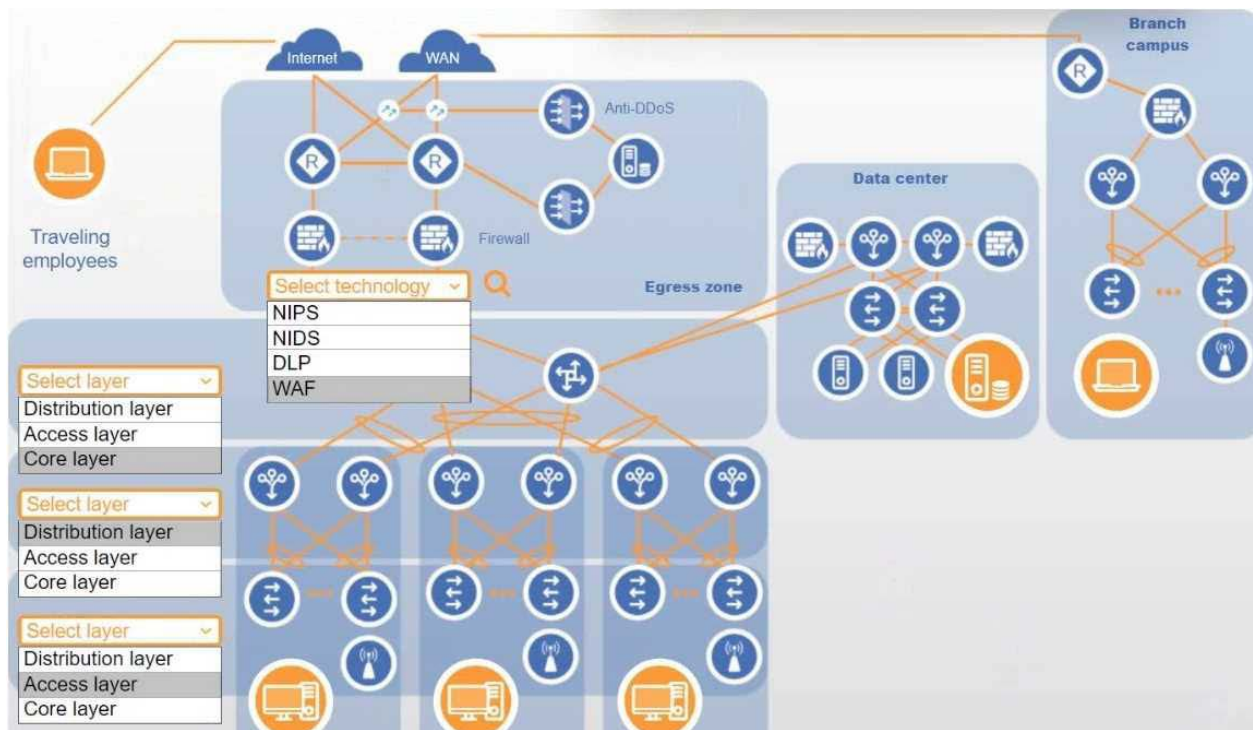
Use the drop-down menus to determine the appropriate technology and label for each layer on the diagram. Options may only be used once.

Click on the magnifying glass to make additional configuration changes.

If at any time you would like to bring back the initial state of the simulation, please click the Reset All button.



Answer:



Question: 4

As part of a project to modernize a sports stadium and improve the customer service experience for fans, the stadium owners want to implement a new wireless system. Currently, all tickets are electronic and managed by the stadium mobile application. The new solution is required to allow location tracking precision within 5ft (1.5m) of fans to deliver the following services:

Emergency/security assistance

Mobile food order

Event special effects

Raffle winner location displayed on the giant stadium screen

Which of the following technologies enables location tracking?

- A. SSID
- B. BLE
- C. NFC
- D. IoT

Answer: B

Explanation:

BLE (Bluetooth Low Energy) is a wireless personal area network (WPAN) technology designed for applications that require lower energy consumption and reduced cost while maintaining a communication range similar to classic Bluetooth. BLE supports location tracking with an accuracy range typically between 1 to 2 meters (approximately 3 to 6 feet), making it ideal for applications

that demand fine-grained location services, such as stadium services requiring real-time user proximity data.

According to the CompTIA CloudNetX CNX-001 Official Objectives, under the Network Architecture domain, specifically in the subdomain:

"Wireless Technologies: Identify capabilities of BLE, NFC, RFID, and IoT devices within a network environment," it is outlined that:

"BLE enables proximity-based services and real-time indoor location tracking with high accuracy when used with beacon infrastructure."

"BLE beacons can be deployed throughout a physical space, transmitting signals received by mobile applications to determine a user's location within a few feet."

"BLE is widely adopted for use cases including indoor navigation, asset tracking, and personalized user engagement, making it a critical technology for modern high-density venues such as stadiums."

In comparison:

SSID merely identifies a wireless network and has no location tracking function.

NFC requires close contact (under 4 cm), and is not suitable for continuous or broad-range tracking.

IoT is an overarching category that includes connected devices and sensors; however, IoT is not a standalone location tracking technology. It may include BLE as a component, but BLE specifically provides the precise location tracking functionality.

These distinctions are explicitly addressed in the CompTIA CloudNetX CNX-001 Study Guide, under the section:

"Emerging Network Technologies and Architectures", where BLE is described as a key enabling technology for context-aware and location-based services in enterprise and public environments.

Question: 5

A company is experiencing Wi-Fi performance issues. Three Wi-Fi networks are available, each running on the 2.4 GHz band and on the same channel. Connecting to each Wi-Fi network yields slow performance. Which of the following channels should the networks be configured to?

- A. Channel 1, Channel 2, and Channel 3
- B. Channel 2, Channel 4, and Channel 9
- C. Channel 1, Channel 6, and Channel 11
- D. Channel 3, Channel 5, and Channel 10

Answer: C

Explanation:

These are the three non-overlapping channels in the 2.4 GHz band, eliminating co-channel and adjacent-channel interference for optimal Wi-Fi performance.

Thank You for Trying Our Product

Special 16 USD Discount Coupon: NSZUBG3X

Email: support@examsempire.com

**Check our Customer Testimonials and ratings
available on every product page.**

Visit our website.

<https://examsempire.com/>