

UiPath

UiPath-SAIv1

**UiPath Certified Professional Specialized AI Professional
v1.0**

For More Information – Visit link below:

<https://www.examsempire.com/>

Product Version

- 1. Up to Date products, reliable and verified.**
- 2. Questions and Answers in PDF Format.**



<https://examsempire.com/>

Visit us at: <https://www.examsempire.com/uipath-saiv1>

Latest Version: 6.0

Question: 1

What functionality does the Step Out action offer when a developer is reviewing a process during debugging?



- A. Re-executes the activity which threw an exception.
- B. Executes activities in the current container and then pauses the execution.
- C. Executes only one activity at a time and then pauses the execution.
- D. Steps out and stops current execution.

Answer: B

Explanation:

Comprehensive and Detailed Explanation From Exact Extract:

The "Step Out" option in UiPath Studio's Debugging toolbar, as shown in the image, is used when debugging a process and you have stepped inside a function, invoked workflow, or nested container. If you want to exit from the current container (e.g., a workflow or sequence) and return to the caller or parent scope, you use Step Out.

It executes all remaining activities within the current container, and once complete, pauses the execution back at the point where that container was invoked.

It does not stop execution, nor does it re-execute exceptions or pause after every activity (like Step Into or Step Over).

Visual Confirmation from the Image:

The "Step Out" button is highlighted in red, indicating it's active and available during debugging. It is grouped alongside "Step Into" and "Step Over," all part of debug control options.

Use Case:

Suppose you're debugging a workflow and step into an invoked file or a "Then" branch. If everything looks fine, you can use Step Out to quickly exit and return control to the parent workflow without stepping through every line.

UiPath Documentation Reference:

Debugging in Studio – UiPath Docs

Question: 2

To determine the number of characters scraped from a website in an "ExtractedText" String variable, excluding leading and trailing white-space characters, what should a developer use?

- A. ExtractedText.Trim.Chars
- B. ExtractedText.Length
- C. ExtractedText.Trim.Length
- D. ExtractedText.Chars

Answer: C

Explanation:

Comprehensive and Detailed Explanation From Exact Extract:

To get the character count excluding leading and trailing spaces, .Trim() is used to remove whitespace and .Length provides the character count. So the correct expression is ExtractedText.Trim.Length.

Trim: Removes all leading and trailing white-space characters.

Length: Returns the number of characters in the string.

UiPath Documentation Reference: String Manipulations in VB.NET – Microsoft Docs

Also validated in UiPath Academy: Developer Foundation Course – String Manipulation Module

Question: 3

When training labels and general fields in UiPath Communications Mining, what is the recommended approach to training efficiency?

- A. Focus on labels, and general fields will be trained automatically.
- B. Train both labels and general fields at the same time.
- C. Train only general fields for faster results.
- D. Train general fields first, then labels.

Answer: B

Explanation:

Comprehensive and Detailed Explanation From Exact Extract:

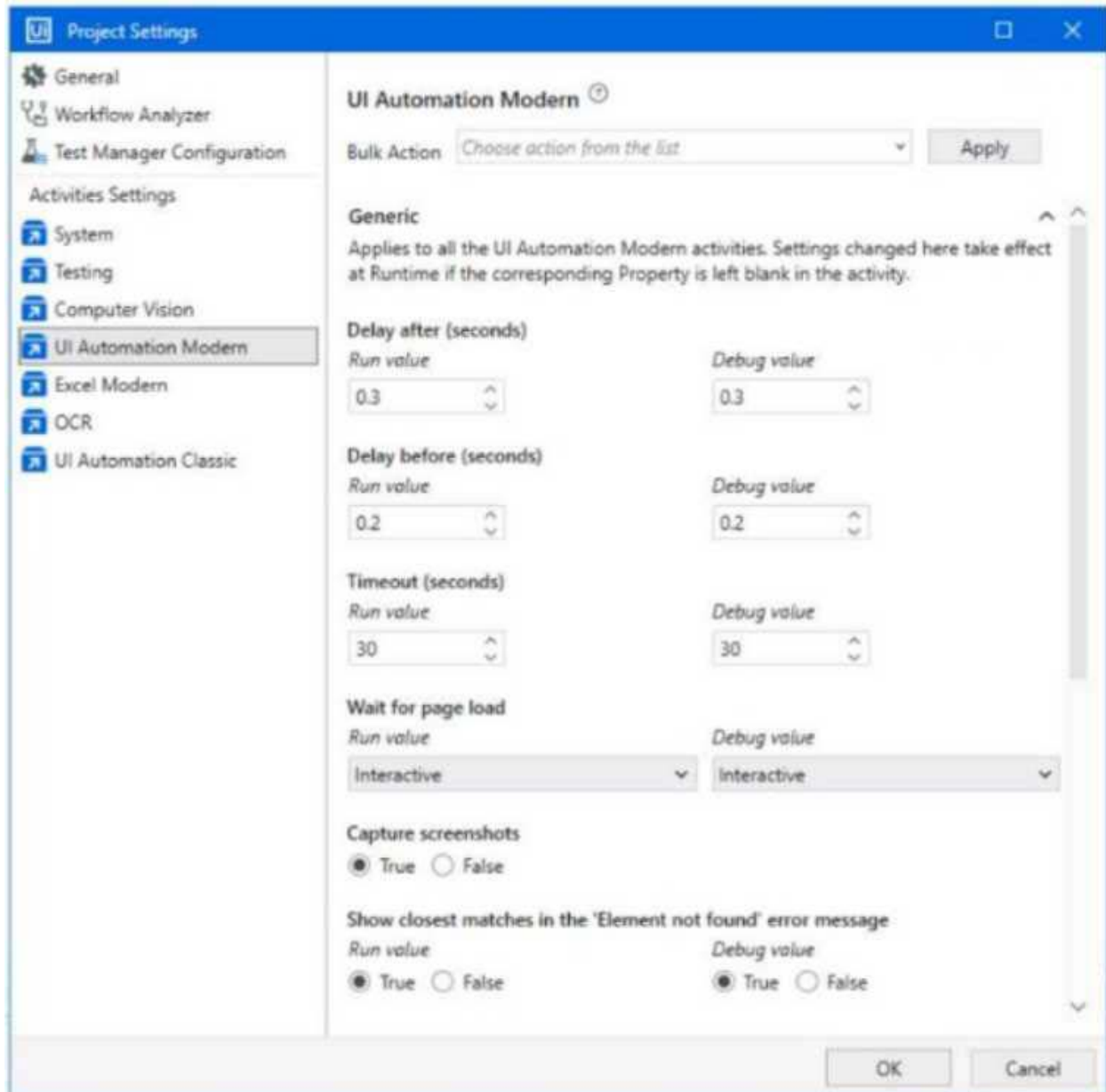
The recommended practice in Communications Mining is to train both labels and general fields simultaneously. This ensures the system learns the relationships and intent expressions effectively.

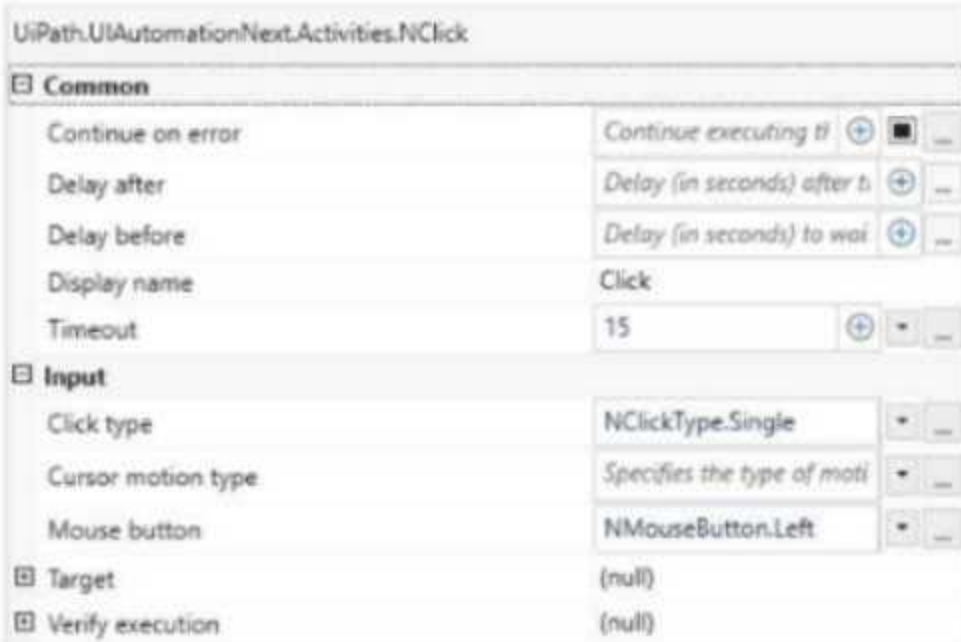
This approach helps improve the overall model accuracy by leveraging training signals from both classification and field extraction.

UiPath Documentation Reference: UiPath Communications Mining Documentation – Labeling Strategy

Question: 4

A developer configured the UI Automation Project Settings and the Properties of a Click activity as shown in the following exhibits:





If the target element is not found during execution in Run mode, how long will it take until an error is thrown (based on default project settings)?

- A. 0.15
- B. 0.2
- C. 15
- D. 30

Answer: C

Explanation:

Comprehensive and Detailed Explanation From Exact Extract:

In UiPath, when executing an activity such as Click, the timeout behavior is determined as follows:

If the Timeout property in the activity is set, that value is used.

If the Timeout is left blank, the system uses the default from Project Settings under UI Automation Modern → Timeout.

In this case (based on the second image):

The Click activity explicitly has Timeout set to 15 seconds.

Therefore, this activity will override the project-level default timeout (which is 30 seconds as seen in the first image).

Rule Applied:

Activity Timeout > Project Settings Timeout (if defined)

Hence, if the target element is not found, UiPath will wait for 15 seconds, as specified in the activity's Timeout field, before throwing an error.

UiPath Documentation Reference:

TimeoutMS Property – UiPath Docs

Question: 5

What is OCR (Optical Character Recognition)?

- A. OCR is a document classification method.
- B. OCR is a method that reads text from images, recognizing each character and its position.
- C. OCR is a platform that enables you to do text-to-speech and speech-to-text.
- D. OCR is a tool used to interpret information extracted from documents.

Answer: B

Explanation:

Comprehensive and Detailed Explanation From Exact Extract:

Optical Character Recognition (OCR) is a method used to convert different types of documents (PDFs, scanned paper documents, images) into editable and searchable data by recognizing characters and their positions.

OCR is vital in Document Understanding to digitize unstructured data from images and scanned docs.

UiPath Documentation Reference:

OCR Engines in Document Understanding

Thank You for Trying Our Product
Special 16 USD Discount Coupon: NSZUBG3X

Email: support@examsempire.com

**Check our Customer Testimonials and ratings
available on every product page.**

Visit our website.

<https://examsempire.com/>