

CompTIA 220-1002

CompTIA A+ Certification Exam: Core 2

For More Information – Visit link below:

<https://www.examsempire.com/>

Product Version

- 1. Up to Date products, reliable and verified.**
- 2. Questions and Answers in PDF Format.**



<https://examsempire.com/>

Visit us at: <https://www.examsempire.com/220-1002>

Latest Version: 32.0

Question: 1

A user has installed two new drives in one of the computers in the computer lab and has been unable to format Disk1 from the command prompt.

The lab requires that Disk1 be a dynamic disk configured with two partitions. The first partition must be 256,000 MB in size and mapped to drive F. The second partition must be 512,000 MB in size and mapped to drive G.

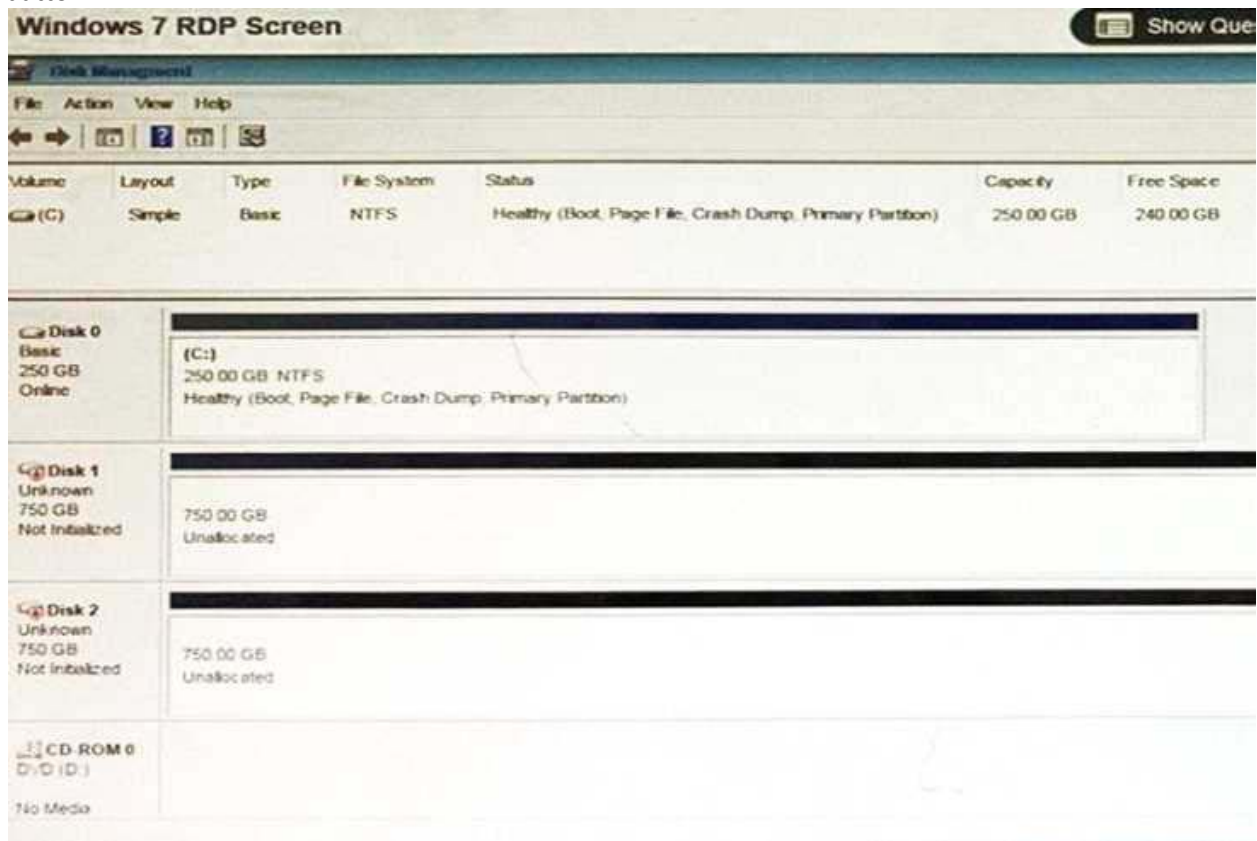
The new partitions must be formatted to ensure that user's files can be secured from other users and that the disk must be configured to account for future redundancy.

Make sure to maintain a consistent file system.

INSTRUCTIONS:

Conduct the necessary steps within the Disk Manager to accomplish these tasks.

If at any time you would like to bring back the initial state of the simulation, please click the Reset All button.



Answer: Please review explanation for detailed answer.

Please review explanation for detailed answer.

Right click on disk 1, click on initialize

Choose disk and option as MBR. Hit ok.

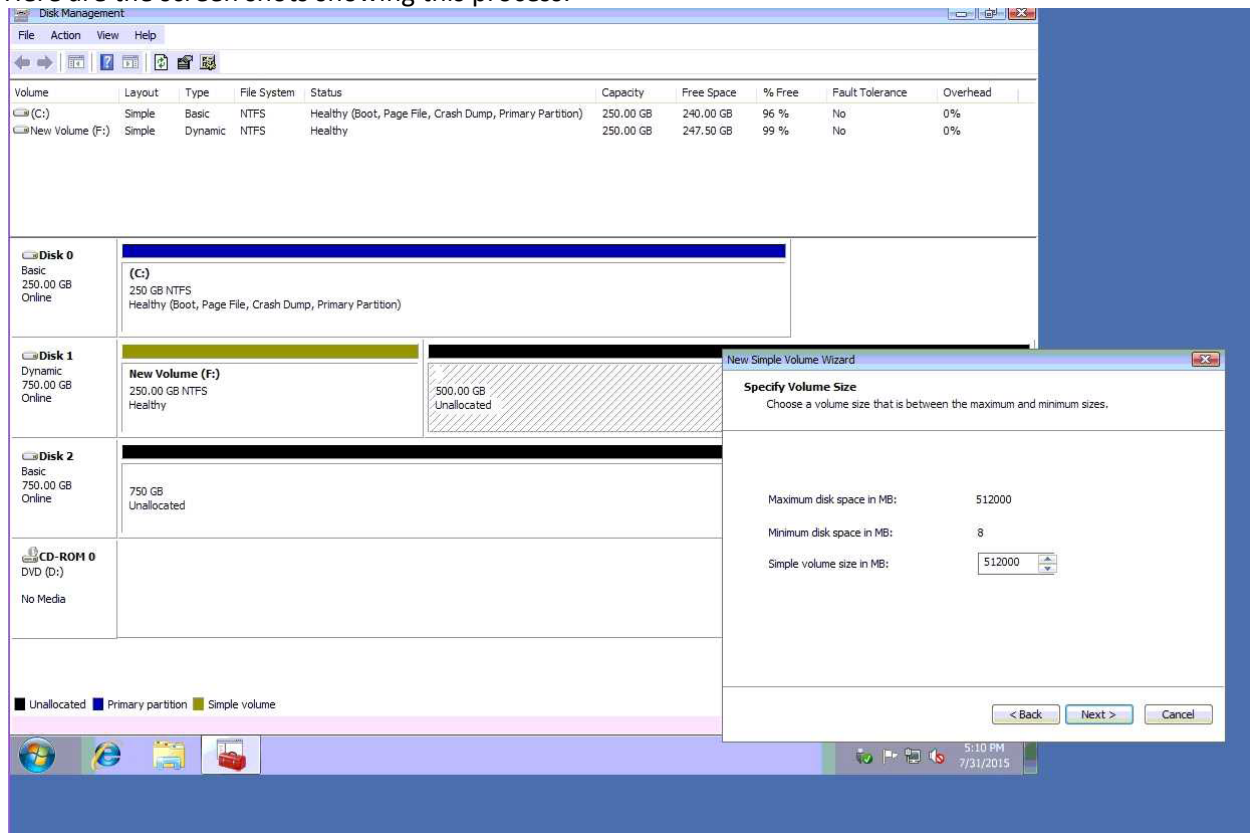
Again, right click on disk 1 and choose convert to dynamic disk.

Now right click on disk 1 and choose new simple volume.

Specify storage as 256000 and assign a drive letter F and choose file system as NTFS and click finish.

Do the same thing for rest of space of disk 1, assigning 512000MB and using Disc G

Here are the screen shots showing this process:



Disk Management

Volume	Layout	Type	File System	Status	Capacity	Free Space	% Free	Fault Tolerance	Overhead
(C:)	Simple	Basic	NTFS	Healthy (Boot, Page File, Crash Dump, Primary Partition)	250.00 GB	240.00 GB	96 %	No	0%
New Volume (F:)	Simple	Dynamic	NTFS	Healthy	250.00 GB	247.50 GB	99 %	No	0%

Disk 0
Basic
250.00 GB
Online
(C:)
250 GB NTFS
Healthy (Boot, Page File, Crash Dump, Primary Partition)

Disk 1
Dynamic
750.00 GB
Online
New Volume (F:)
250.00 GB NTFS
Healthy
500.00 GB
Unallocated

Disk 2
Basic
750.00 GB
Online
750 GB
Unallocated

CD-ROM 0
DVD (D:)
No Media

Legend: Unallocated (black), Primary partition (blue), Simple volume (green)

New Simple Volume Wizard
Assign Drive Letter or Path
For easier access, you can assign a drive letter or drive path to your partition.

Assign the following drive letter:
Letter: G

Mount in the following empty NTFS folder:
Browse...

Do not assign a drive letter or drive path

< Back Next > Cancel

Disk Management

Volume	Layout	Type	File System	Status	Capacity	Free Space	% Free	Fault Tolerance	Overhead
(C:)	Simple	Basic	NTFS	Healthy (Boot, Page File, Crash Dump, Primary Partition)	250.00 GB	240.00 GB	96 %	No	0%
New Volume (F:)	Simple	Dynamic	NTFS	Healthy	250.00 GB	247.50 GB	99 %	No	0%

Disk 0
Basic
250.00 GB
Online
(C:)
250 GB NTFS
Healthy (Boot, Page File, Crash Dump, Primary Partition)

Disk 1
Dynamic
750.00 GB
Online
New Volume (F:)
250.00 GB NTFS
Healthy
500.00 GB
Unallocated

Disk 2
Basic
750.00 GB
Online
750 GB
Unallocated

CD-ROM 0
DVD (D:)
No Media

Legend: Unallocated (black), Primary partition (blue), Simple volume (green)

New Simple Volume Wizard
Format Partition
To store data on this partition, you must format it first.

Choose whether you want to format this volume, and if so, what settings you want to use.

Do not format this volume

Format this volume with the following settings:

File system: NTFS

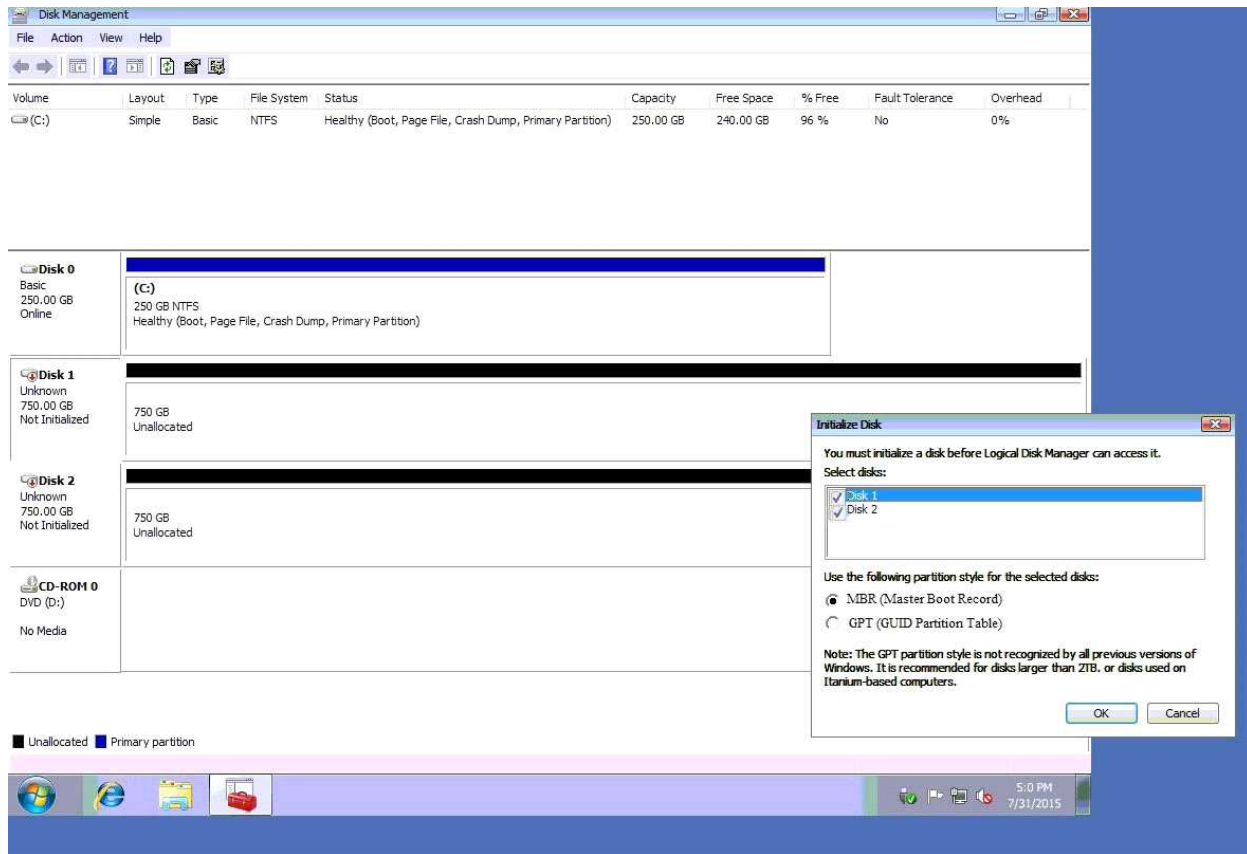
Allocation unit size: Default

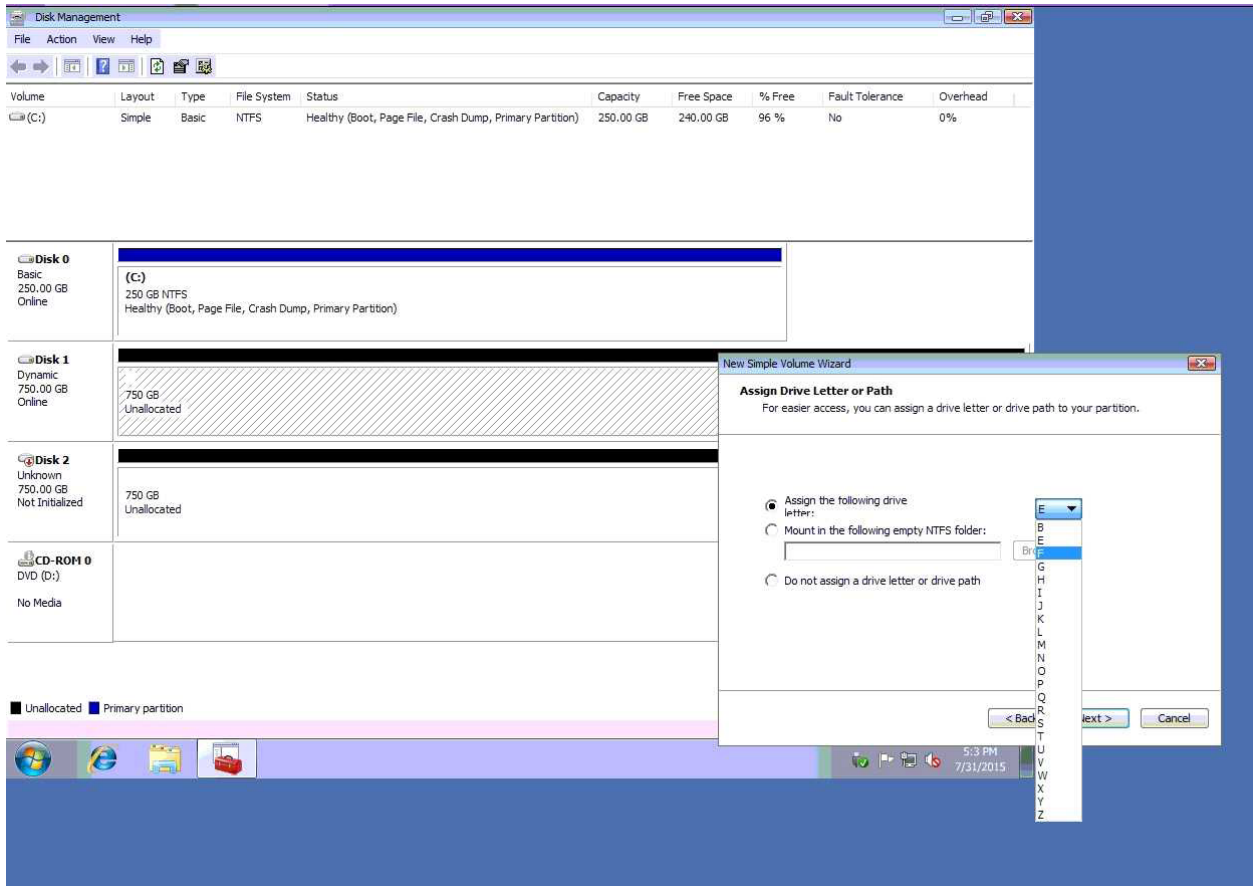
Volume label: New Volume

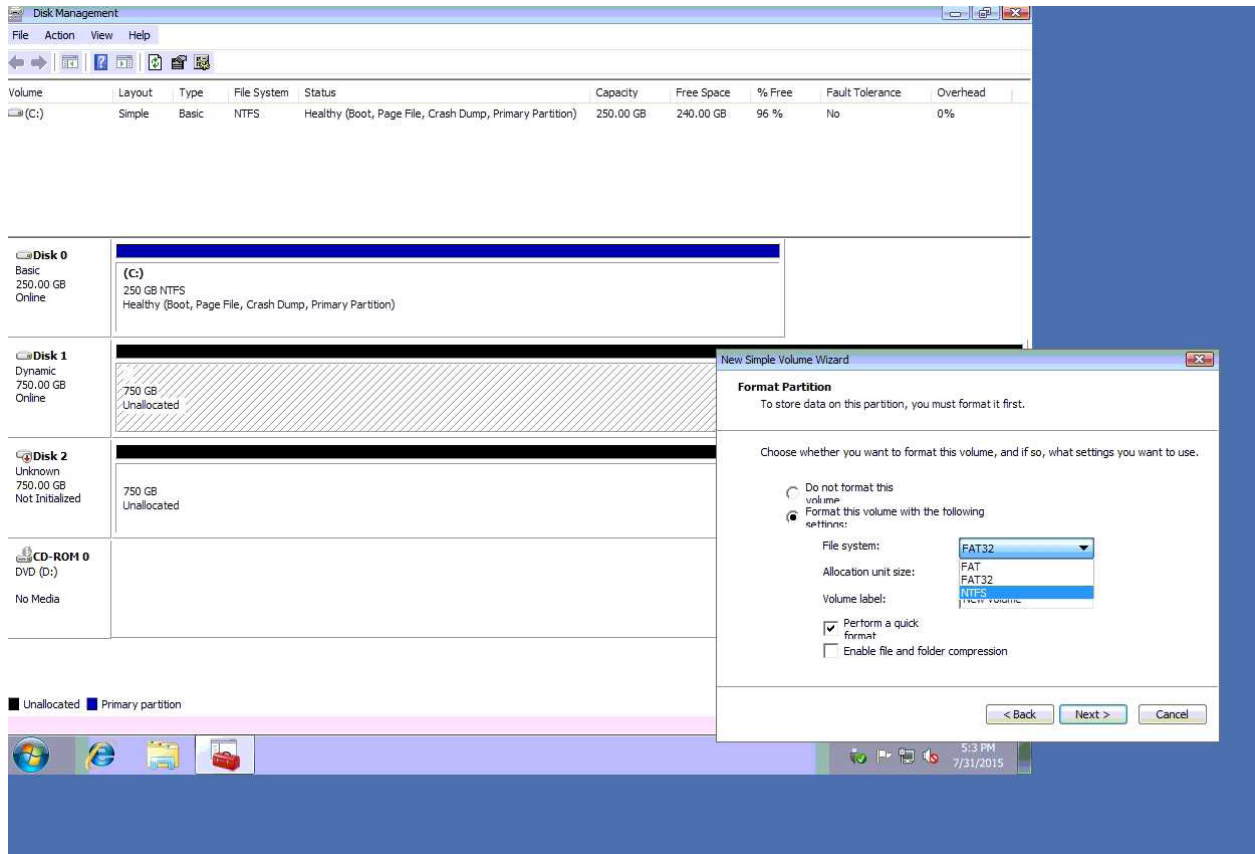
Perform a quick format

Enable file and folder compression

< Back Next > Cancel










Disk Management

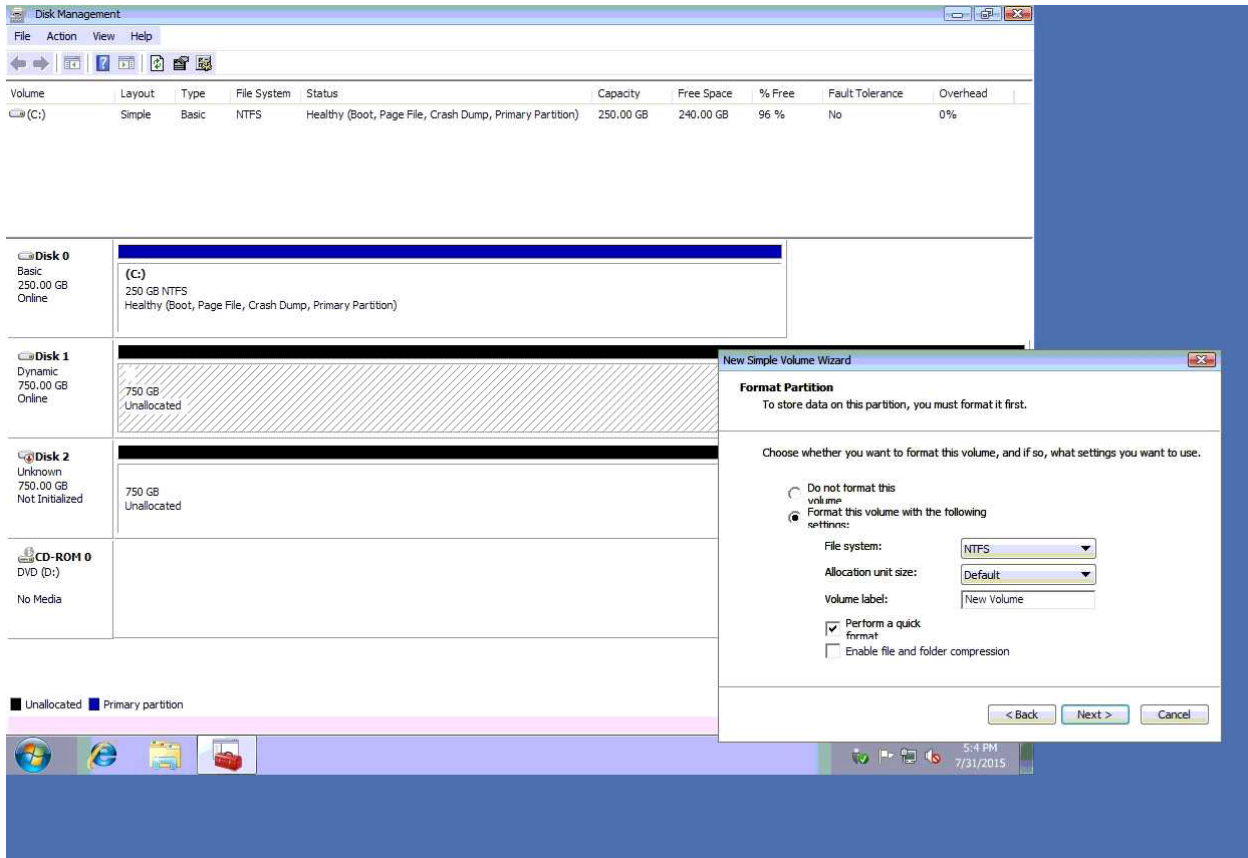
File Action View Help

Volume	Layout	Type	File System	Status	Capacity	Free Space	% Free	Fault Tolerance	Overhead
(C:)	Simple	Basic	NTFS	Healthy (Boot, Page File, Crash Dump, Primary Partition)	250.00 GB	240.00 GB	96 %	No	0%
New Volume (F:)	Simple	Dynamic	NTFS	Healthy	250.00 GB	247.50 GB	99 %	No	0%
New Volume (G:)	Simple	Dynamic	NTFS	Healthy	500.00 GB	495.00 GB	99 %	No	0%

Disk 0 Basic 250.00 GB Online	 <p>(C:) 250 GB NTFS Healthy (Boot, Page File, Crash Dump, Primary Partition)</p>		
Disk 1 Dynamic 750.00 GB Online	 <table border="1"> <tbody> <tr> <td> New Volume (F:) 250.00 GB NTFS Healthy </td> <td> New Volume (G:) 500.00 GB NTFS Healthy </td> </tr> </tbody> </table>	New Volume (F:) 250.00 GB NTFS Healthy	New Volume (G:) 500.00 GB NTFS Healthy
New Volume (F:) 250.00 GB NTFS Healthy	New Volume (G:) 500.00 GB NTFS Healthy		
Disk 2 Basic 750.00 GB Online	 <p>750 GB Unallocated</p>		
CD-ROM 0 DVD (D:) No Media			

■ Unallocated
 ■ Primary partition
 ■ Simple volume

5:13 PM
7/31/2015



Question: 2

A technician arrives on site to find that two users who have the same model on Android smartphone are having the same issue with a specific application. Whenever they attempt to launch the application, it fails and gives an error message. Which of the following should the technician do FIRST?

- A. Reinstall the application
- B. Roll back the application to the earlier version
- C. Clear the application cache
- D. Update the OS of the smartphones

Answer: D

Question: 3

A technician is working on a Windows 10 PC that is running slowly. Which of the following commands should the technician use to correct this issue? (Select two.)

- A. dir

- B. chdisk
- C. diskpart
- D. ipconfig
- E. format
- F. diskpart

Answer: B, C

Question: 4

An administrator is setting up a Windows terminal server. Which of the following settings should the administrator modify to increase server security? (Select two.)

- A. Change the default access port
- B. Enforce password complexity
- C. Put the terminal server into the router's DMZ
- D. Disable logon time restrictions
- E. Block all unused ports on the LAN smart switch
- F. Use the local client certificate for server authentication

Answer: B, E

Question: 5

A company has hired a new IT firm to manage its network switches and routers. The firm is geographically separated from the company and will need to be able to securely access the devices.

Which of the following will provide the ability to access these devices?

- A. Telnet
- B. SSH
- C. RDP
- D. VNC

Answer: B

Thank You for Trying Our Product
Special 16 USD Discount Coupon: NSZUBG3X

Email: support@examsempire.com

**Check our Customer Testimonials and ratings
available on every product page.**

Visit our website.

<https://examsempire.com/>